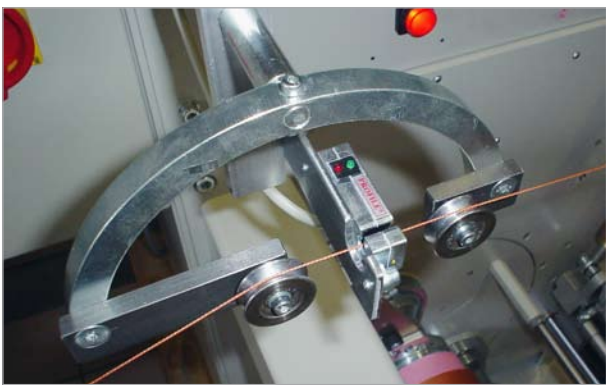


## On-line yarn quality control on Sahm winding machines



BMS's absolute optical yarn clearer BARCOPROFILE is now available for Sahm winding machines for technical yarns.

The sensor detects yarn defects such as thick and thin places, knots, bad splices, ... When the position produces an off-quality product BARCOPROFILE flags immediately an alarm.

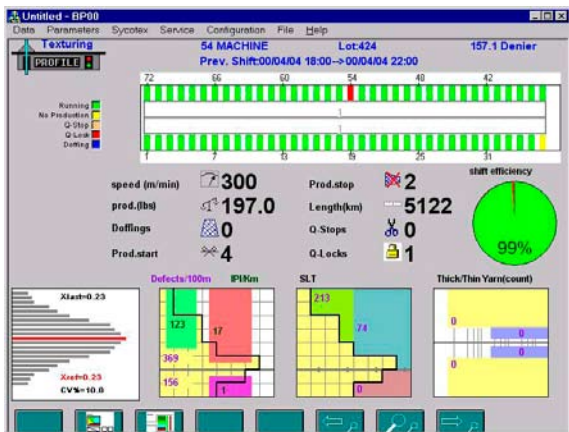
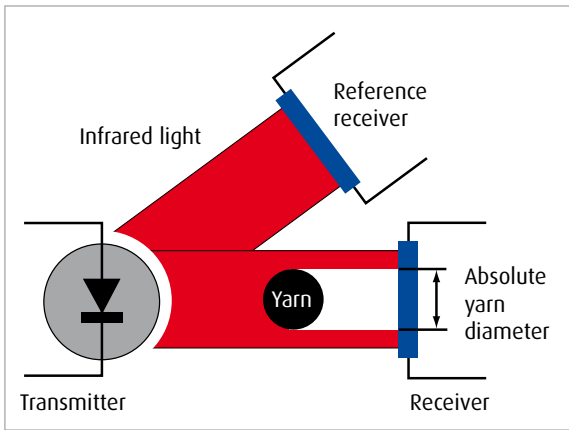
BARCOPROFILE substitutes time consuming laboratory-based spot checks with a 100% on-line real-time quality assurance.

Additional features offered include length measurement and accurate reporting of production parameters such as produced weight, efficiency, ... Exception reporting provides a sound approach to preventive maintenance.

Integration into a BMS's CIM systems such as SPINMASTER is also possible.



# Optical and absolute yarn diameter control



## Operating principle

The sensor measures the shadow cast by the yarn on the photo receiver. State of the art optoelectronics ensure a supreme stability in even the most adverse environments. This allows an absolute measurement and leads to a detector capability of even the faintest gradual diameter changes. From the rapid succession of measured diameter the yarn profile is reconstructed and digitally analyzed using sophisticated software algorithms.

## Specifications

- Yarn count range: 5 - 3500 Tex.
- Speed range: 0 - 1000 m/min.
- Diameter measurement accuracy 0.01 mm.
- Detection and classification of thick and thin places such as slubs, knots, splices, ...
- Detection of thick and thin yarn caused by e.g. bad dipping, a missing yarn component, ...
- Control of the overall yarn irregularity, detection of irregular dipping and twisting.
- Immediate alarm, production stop or package doff in case off-quality yarn is detected.
- Position based efficiency monitoring.
- Off-standard or exception reporting providing diagnostics and machine performance improvement tools.
- Fully integrated into the machine control logic.
- Option: position based length measurement.

## BarcoProfile benefits

- No more expensive and time consuming offline lab spot testing and sampling.
- Superior and fault free yarn guaranteed.
- Reduction of 2nd quality yarn and waste.
- Satisfied customers.
- High flexibility and quality trouble shooting.
- At any time up-to-date and well maintained machines.



Sahm Georg GmbH & Co. KG  
Sudetenlandstraße 33  
37269 Eschwege  
Germany  
Tel. +49 5651 804 0  
Fax +49 5651 13620  
www.sahmwinder.de

[www.visionbms.com](http://www.visionbms.com)

**BarcoVision**  
In Pursuit of Productivity

BMS bvba  
Vlamingsstraat 16  
8560 Wevelgem  
Belgium  
Tel. +32 56 262 611  
Fax +32 56 262 690  
sales.bv@visionbms.com

BMS Vision Ltd  
Capricorn Park, Blakewater Road  
Blackburn, Lancashire, BB1 5QR  
United Kingdom  
Tel. +44 1254 662 244  
Fax +44 1254 267 100  
sales.bla@visionbms.com

BMSVision LLC  
4420 Taggart Creek Road, Suite 101  
Charlotte, North Carolina 28208  
United States  
Tel. +1 704 392 9371  
Fax +1 704 399 5588  
sales@visionbmsusa.com

Belgian Monitoring Systems  
is a member of the Itema group.  
[www.itemagroup.com](http://www.itemagroup.com)